

# **MK5A**

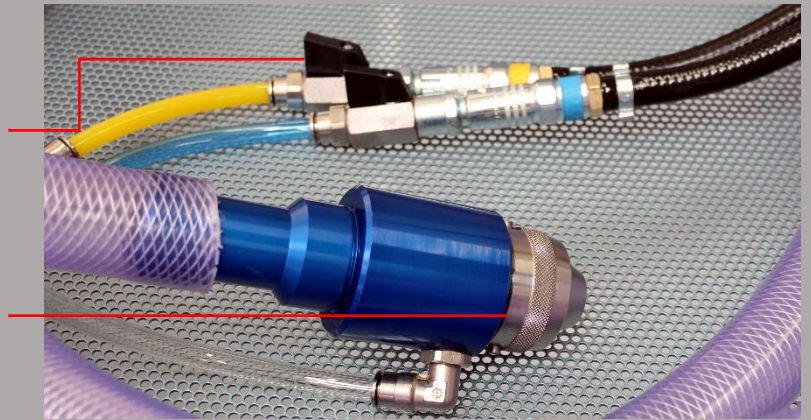
## Premix Spray Gun



**POWER-SPRAYS**

Twin air controls allows the pump to be stopped remotely, whilst continuing to spray material in the line

Removeable nozzle assembly, for easy cleaning



The MK5A Premix Spray Gun has been specifically developed for spraying Glass Fibre Reinforced Mortars. The unit is lightweight, simple to operate and very easy to maintain.

Experience in pumping and spraying GRC materials has demonstrated the importance of minimising interruptions to the smooth flow of the material. The design of the MK5A gun has fully addressed this aspect. From the gun inlet through to the specially developed premix nozzle a clear open passage is maintained. The spray air is added only at the nozzle, which ensures an even spray distribution without interruption to material flow. A bayonet coupling allows the nozzle to be quickly released in the case of blockages and for cleaning. When used with the PS38i Combination Spray System, the spray output rate can be up to 25kg (55lb) per minute.

### Specifications

<b>Weight</b>	0.9kg
<b>Dimensions</b>	185mm long x 60mm diameter (main body)
<b>Air Consumption</b>	750L/min (25CFM) approx. at minimum pressure of 4 bar (50psi)
<b>Slurry Inlet</b>	Ø 32mm (1.25") hose tail (slurry hose not included)
<b>Output (variable)</b>	10-25kg/min (15kg/min typical)
<b>Fibre Lengths</b>	6mm, 13mm and 19mm are sprayable

### Why Buy from Power-Sprays?

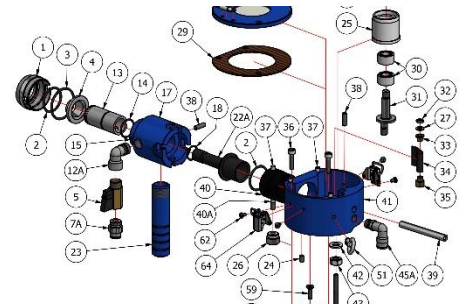
#### Support



#### Experience



#### Comprehensive Technical Manuals



#### Power-Sprays Ltd

Avonmouth Way, Bristol, BS11 9YA, UK  
 Tel: +44 (0)117 9820067 Fax: +44 (0)117 9820060  
 Email: [info@power-sprays.co.uk](mailto:info@power-sprays.co.uk) Web: [www.power-sprays.com](http://www.power-sprays.com)

